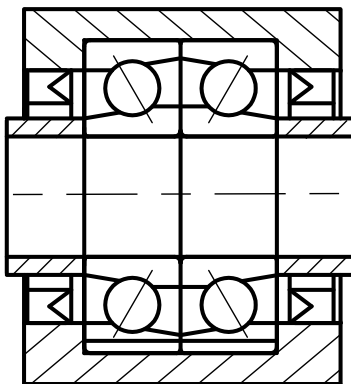




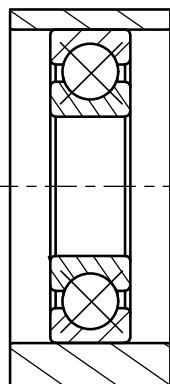
Bearing Supports and End Machining Overview

For most applications, the ball screw end(s) will be supported with a bearing. Configurations that are commonly used to support the ends of a ball screw are:

- A pair of back-to-back (fixed support)
- A deep groove radial bearing (floating/simple support)



Fixed Bearing Configuration



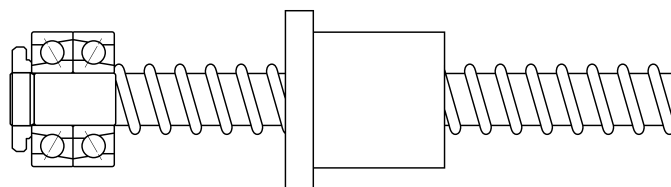
Floating Bearing Configuration



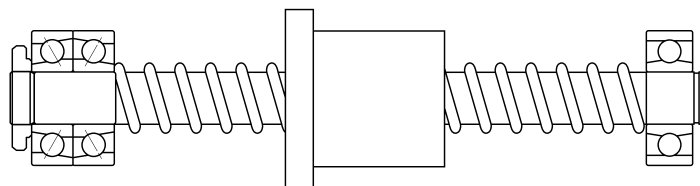
Screw with Machined End and a Bearing Block End Support

Bearing Support Combinations

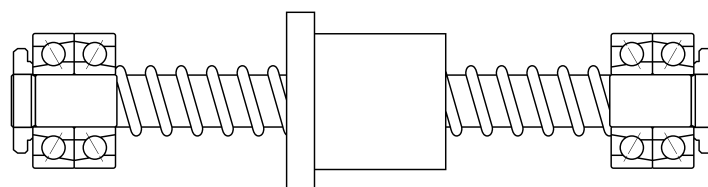
Three combinations of bearing supports are typically used. Fixed on one end and free on the other offers the least support where Fixed on both ends offers the most support. Screws with more support are able to support higher loads without buckling and obtain higher critical speeds.



Fixed / Free



Fixed / Simple



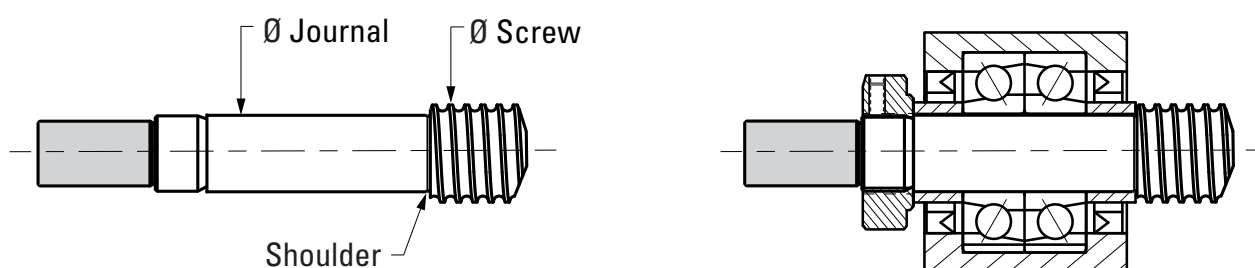
Fixed / Fixed

Bearing Supports and End Machining Overview

End Machining

To fit a bearing support to a ball screw, a bearing journal must first be machined into the screw. The maximum diameter of the journal is limited by the screw geometry. Enough of the screw must be machined away to provide a shoulder for the bearing to seat against. The recommended maximum journal diameter is usually near the ball screws root diameter.

To attach a ball screw to a drive system, a drive extension is machined into the screw. It is important to specify if this drive extension is wanted on one or both ends. The shaded area in the drawings below represents the drive extension. See the specific end machining in the following pages for details.



Diameter x Lead		Maximum Recommended Journal Diameter (mm) ⁽¹⁾	End Support Style and Part Number							
inch	mm		BK	BF	FK	FF	MK	WK	QK	QF
0.500 x all	12 x all	10	7833360	7833368	7833377	7833384	7833685	-	7828282	7833291
0.631 x all	16 x all	12	7833361	7833369	7833378	7833385	7833686	-	7824154	7833256
0.750 x all	20 x all	15	7833362	7833370	7833379	7833386	7833687	-	7824155	7833259
0.875 x all	N/A	17	7833363	7833371	7833380	7833387	-	7833595	7824156	7833262
1.000 x all 1.171 x all	25 x all	20	7833364	7833372	7833381	7833388	7833690	7833596	7824157	7833265
1.150 x all 1.250 x all 1.500 x 0.473 1.500 x 1.000	32 x all	25	7833365	7833373	7833382	7833389	-	7833597	7824158	7833268
1.500 x 0.200 1.500 x 0.250 1.500 x 0.500 1.500 x 1.875 1.500 x 2.000	40 x all	30	7833366	7833374	7833383	7833390	-	7833599	7824159	7833270
1.750 x all	50 x all	40	7833367	7833375	-	-	-	7833602	7829554	7833273
2.000 x all	N/A	45	7833367	7833375	-	-	-	-	7824160	7833276
2.500 x all	63 x all	50	-	-	-	-	-	-	7824161	7833279

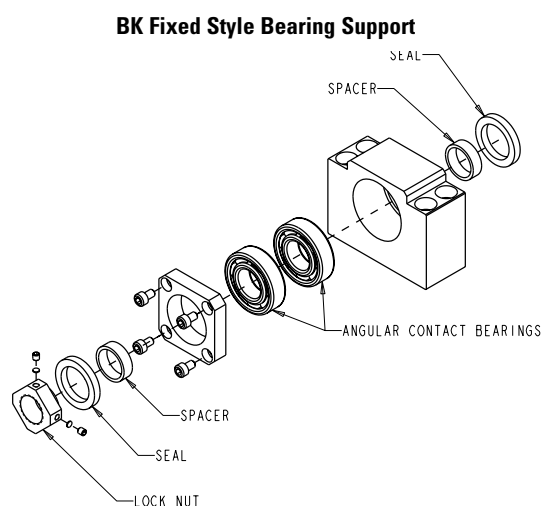
(1) Some support blocks or applications may use a journal smaller than the maximum recommended diameter.



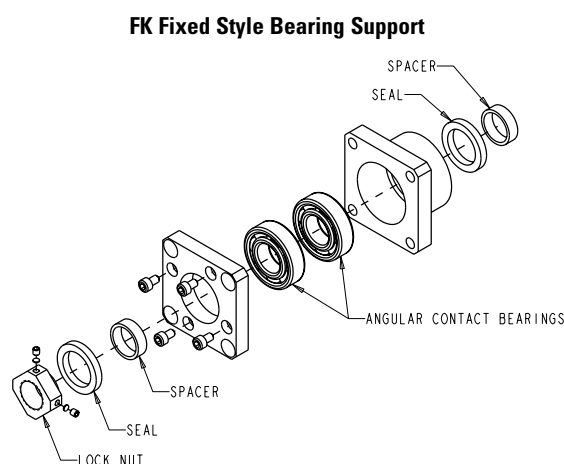
Bearing Supports and End Machining Overview

Thomson Bearing Supports — complete package for mounting of Thomson ball screw and ball spline assemblies. Flange and Base mounts available with dual angular contact bearings or floating radial bearing.

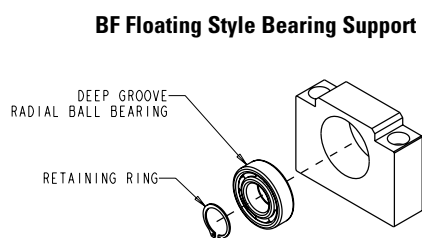
- Rugged steel construction
- Low profile, compact design
- Base or Flange mounting configurations
- Pre-assembled and ready for installation
- Available off-the-shelf



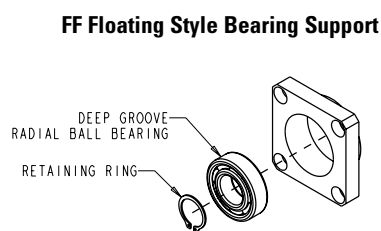
The base mounted BK Bearing Support contains an angular contact bearing pair for increased stiffness and axial load capacity.



The flange mounted FK Bearing Support contains an angular contact bearing pair for increased stiffness and axial load capacity.



The base mounted BF Bearing Support contains a floating radial bearing to allow axial shaft movement.



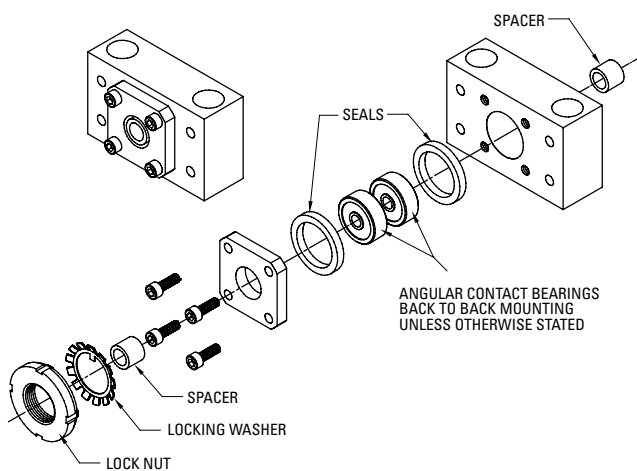
The flange mounted FF Bearing Support contains a floating radial bearing to allow axial shaft movement.

Bearing Supports and End Machining Overview

Thomson Bearing Supports — a unitized package for mounting of Thomson ball screw and ball spline assemblies. Both "Floating" and "Fixed" style bearing supports are available.

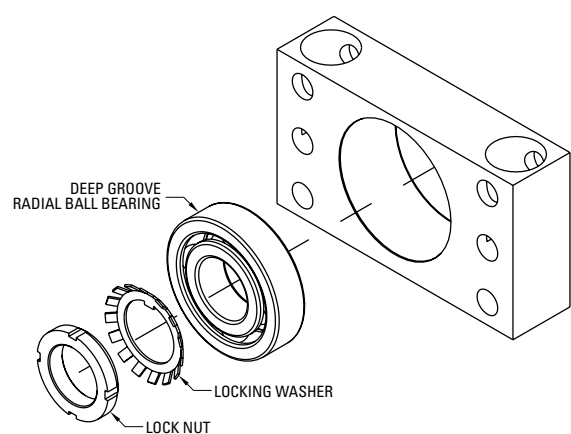
- Pre-assembled and ready for installation
- Available off-the-shelf for quick building convenience
- Rugged steel construction
- Low profile, compact design
- Foot or face mounting

QK Fixed Style Bearing Support



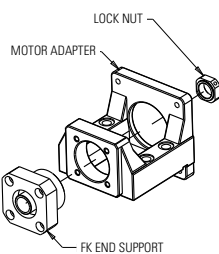
The QK Bearing Support contains high angular contact bearings arranged in a back-to-back (DB) configuration for high stiffness. Design dimensions fit standard Type QK or QK1 end machining.

QF Floating Style Bearing Support



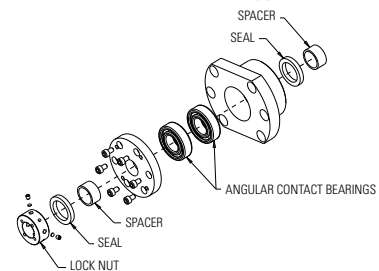
The QF Bearing Support provides a single deep groove radial ball bearing. Design dimensions fit standard Type QF or QF1 end machining.

MK Fixed Style Bearing Support



Base mounted NEMA 23 or 34 motor mount.

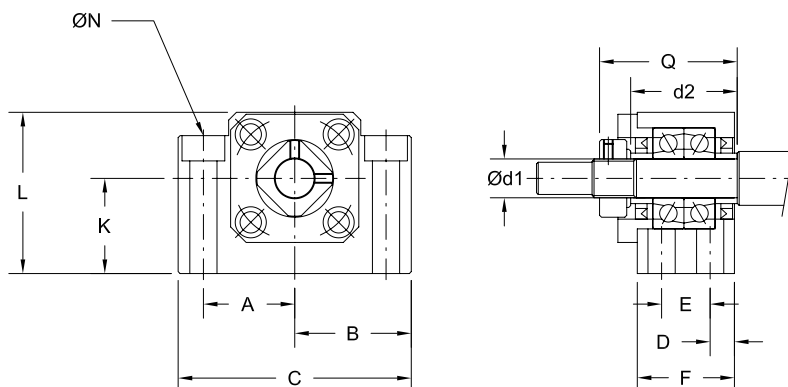
WK Fixed Style Bearing Support



Heavy duty flange mounted WK support contains higher load capacity bearings.



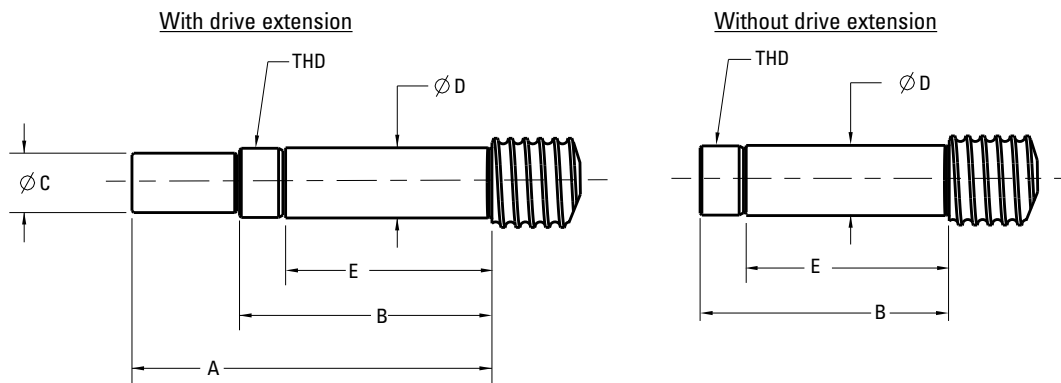
Base Mount – Fixed Bearing Support (BK)



Standard P/N	Dia. x Lead (inch (mm))	Bearing Block Dimensions (inch (mm))											
		d1 (mm)	d2	A	B	C	D	E	F	K ±0.001 (±0.02)	L	N	Q
7833360	0.500 (12)	10	1.063 (27.0)	0.906 (23.0)	1.181 (30.0)	2.362 (60.0)	0.236 (6.0)	0.512 (13.0)	0.984 (25.0)	0.866 (22.0)	1.535 (39.0)	4x 0.260 (6.6) Thru, 0.425 (10.8) C-Bore x 0.197 (5.0) Dp	1.339 (34.0)
7833361	0.631 (16)	12	1.063 (27.0)	0.906 (23.0)	1.181 (30.0)	2.362 (60.0)	0.236 (6.0)	0.512 (13.0)	0.984 (25.0)	0.984 (25.0)	1.693 (43.0)	4x 0.260 (6.6) Thru, 0.425 (10.8) C-Bore x 0.059 (1.5) Dp	1.339 (34.0)
7833362	0.750 (20)	15	1.496 (38.0)	1.063 (27.0)	1.378 (35.0)	2.756 (70.0)	0.236 (6.0)	0.591 (15.0)	1.063 (27.0)	1.102 (28.0)	1.890 (48.0)	4x 0.260 (6.6) Thru, 0.433 (11.0) C-Bore x 0.256 (6.5) Dp	1.496 (38.0)
7833363	0.875 (22)	17	1.732 (44.0)	1.339 (34.0)	1.693 (43.0)	3.386 (86.0)	0.315 (8.0)	0.748 (19.0)	1.378 (35.0)	1.535 (39.0)	2.520 (64.0)	4x 0.354 (9.0) Thru, 0.551 (14.0) C-Bore x 0.335 (8.5) Dp	2.008 (51.0)
7833364	1.000 / 1.171 (25)	20	1.969 (50.0)	1.378 (35.0)	1.732 (44.0)	3.465 (88.0)	0.315 (8.0)	0.748 (19.0)	1.378 (35.0)	1.339 (34.0)	2.362 (60.0)	4x 0.354 (9.0) Thru, 0.551 (14.0) C-Bore x 0.335 (8.5) Dp	2.008 (51.0)
7833365	1.150 / 1.250 1.500 x 0.473 (32) 1.500 x 1.000 (32)	25	2.362 (60.0)	1.673 (42.5)	2.087 (53.0)	4.173 (106.0)	0.394 (10.0)	0.866 (22.0)	1.654 (42.0)	1.890 (48.0)	3.150 (80.0)	4x 0.433 (11.0) Thru, 0.699 (17.0) C-Bore x 0.433 (11.0) Dp	2.480 (63.0)
7833366	1.500 x 0.200 1.500 x 0.250 1.500 x 0.500 1.500 x 1.875 1.500 x 2.000 (40)	30	1.969 (50.0)	2.008 (51.0)	2.520 (64.0)	5.039 (128.0)	0.433 (11.0)	0.906 (23.0)	1.772 (45.0)	2.008 (51.0)	3.504 (89.0)	4x 0.551 (14.0) Thru, 0.787 (20.0) C-Bore x 0.512 (13.0) Dp	2.756 (70.0)
7833367	1.750 / 2.000 (50)	40	2.598 (66.0)	2.559 (65.0)	3.150 (80.0)	6.299 (160.0)	0.551 (14.0)	1.299 (33.0)	2.402 (61.0)	2.362 (60.0)	4.331 (110.0)	4x 0.709 (18.0) Thru, 1.024 (26.0) C-Bore x 0.689 (17.5) Dp	3.583 (91.0)

Standard P/N	Bearing Rating				Lock Nut Type	Block Weight (lbs (kg))	Bearing Trade No.
	Dynamic Rating		Static Rating				
	(lbs)	(N)	(lbs)	(N)			
7833360	1168	5197	430	1912	RN10	0.9 (0.4)	7000
7833361	1345	5982	478	2128	RN12	1.0 (0.5)	7001
7833362	1543	6864	529	2353	RN15	1.3 (0.6)	7002
7833363	2690	11963	910	4050	RN17	2.9 (1.3)	7203
7833364	3726	16572	1294	5756	RN20	2.8 (1.3)	7204
7833365	4608	20495	1563	6952	RN25	5.3 (2.4)	7205
7833366	6614	29418	2070	9208	RN30	7.5 (3.4)	7206
7833367	10362	46088	4043	17984	RN40	15.0 (6.8)	7208

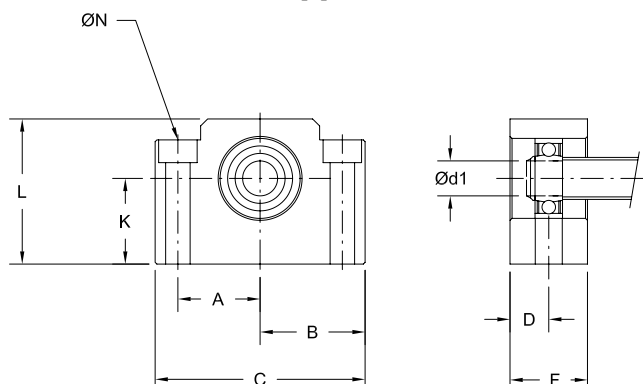
End Machining Dimensions – Fixed Bearing Support (BK)



Standard P/N	Dia x Lead (inch (mm))	Type BK / BK1 (inch (mm))					
		A	B	C (h7)	D (g6)	E	THD
7833360	0.500 (12)	2.008 (51.0)	1.417 (36.0)	0.3150/0.3144 (8.0)	0.3935/0.3932 (9.995/9.988)	0.787 (20.0)	M10x1
7833361	0.631 (16)	2.008 (51.0)	1.417 (36.0)	0.3937/0.3931 (10.0)	0.4722/0.4720 (11.995/11.988)	0.866 (22.0)	M12x1
7833362	0.750 (20)	2.362 (60.0)	1.575 (40.0)	0.4724/0.4717 (12.0)	0.5904/0.5900 (14.995/14.986)	1.102 (28.0)	M15x1
7833363	0.875	2.992 (76.0)	2.087 (53.0)	0.5906/0.5898 (15.0)	0.6691/0.6687 (16.995/16.986)	1.417 (36.0)	M17x1
7833364	1.000 / 1.171 (25)	3.071 (78.0)	2.087 (53.0)	0.6693/0.6686 (17.0)	0.7872/0.7869 (19.995/19.986)	1.496 (38.0)	M20x1
7833365	1.150 / 1.250 1.500 x 0.473 (32) 1.500 x 1.000 (32)	3.740 (95.0)	2.559 (65.0)	0.7874/0.7866 (20.0)	0.9841/0.9837 (24.995/24.985)	1.850 (47.0)	M25x1.5
7833366	1.500 x 0.200 1.500 x 0.250 1.500 x 0.500 1.500 x 1.875 1.500 x 2.000 (40)	4.331 (110.0)	2.835 (72.0)	0.9843/0.9834 (25.0)	1.1809/1.1805 (29.995/29.985)	1.850 (47.0)	M30x1.5
7833367	1.750 / 2.000 (50)	5.630 (143.0)	3.661 (93.0)	1.3780/1.3771 (35.0)	1.5746/1.5742 (39.995/39.985)	2.283 (58.0)	M40X1.5



Base Mount – Floating Bearing Support (BF)



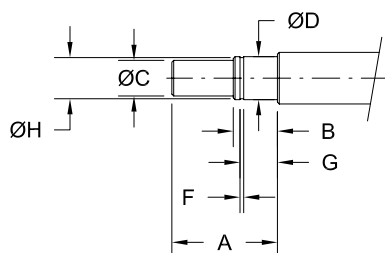
Standard P/N	Dia. x Lead (inch (mm))	Bearing Block Dimensions (inch (mm))								
		d1 (mm)	A	B	C	D	F	K ±0.001 (±0.02)	L	N
7833368	0.500 (12)	8	0.906 (23.0)	1.181 (30.0)	2.362 (60.0)	0.394 (10.0)	0.787 (20.0)	0.866 (22.00)	1.535 (39.0)	2x 0.260 (6.6) Thru, 0.425 (10.8) C-Bore x 0.197 (5.0) Dp
7833369	0.631 (16)	10	0.906 (23.0)	1.181 (30.0)	2.362 (60.0)	0.394 (10.0)	0.787 (20.0)	0.984 (25.00)	1.693 (43.0)	2x 0.260 (6.6) Thru, 0.425 (10.8) C-Bore x 0.059 (1.5) Dp
7833370	0.750 (20)	15	2.244 (57.0)	1.378 (35.0)	2.756 (70.0)	0.394 (10.0)	0.787 (20.0)	1.102 (28.00)	1.890 (48.0)	2x 0.260 (6.6) Thru, 0.433 (11.0) C-Bore x 0.256 (6.5) Dp
7833371	0.875 (22)	17	1.339 (34.0)	1.693 (43.0)	3.386 (86.0)	0.453 (11.5)	0.906 (23.0)	1.535 (39.00)	2.520 (64.0)	2x 0.354 (9.0) Thru, 0.551 (14.0) C-Bore x 0.335 (8.5) Dp
7833372	1.000 1.171 (25)	20	1.378 (35.0)	1.732 (44.0)	3.465 (88.0)	0.512 (13.0)	1.024 (26.0)	1.339 (34.00)	2.362 (60.0)	2x 0.354 (9.0) Thru, 0.551 (14.0) C-Bore x 0.335 (8.5) Dp
7833373	1.150 1.250 1.500 x 0.473 (32) 1.500 x 1.000 (32)	25	1.673 (42.5)	2.087 (53.0)	4.173 (106.0)	0.591 (15.0)	1.181 (30.0)	1.890 (48.00)	3.150 (80.0)	2x 0.433 (11.0) Thru, 0.699 (17.0) C-Bore x 0.433 (11.0) Dp
7833374	1.500 x 0.200 1.500 x 0.250 1.500 x 0.500 1.500 x 1.875 1.500 x 2.000 (40)	30	2.008 (51.0)	2.520 (64.0)	5.039 (128.0)	0.630 (16.0)	1.260 (32.0)	2.008 (51.00)	3.504 (89.0)	2x 0.551 (14.0) Thru, 0.787 (20.0) C-Bore x 0.512 (13.0) Dp
7833375	1.750 2.000 (50)	40	2.559 (65.0)	3.150 (80.0)	6.299 (160.0)	0.728 (18.5)	1.457 (37.00)	2.362 (60.00)	4.331 (110.0)	2x 0.709 (18.0) Thru, 1.024 (26.0) C-Bore x 0.689 (17.5) Dp

Standard P/N	*Snap Ring (mm)	Block Weight (lbs (kg))	Bearing Trade No.
7833368	8	0.7 (0.3)	608
7833369	10	0.8 (0.4)	6000
7833370	15	0.9 (0.42)	6002
7833371	17	1.7 (0.8)	6203
7833372	20	1.7 (0.8)	6204
7833373	25	3.2 (1.5)	6205
7833374	30	4.3 (2.0)	6206
7833375	40	7.3 (3.3)	6208

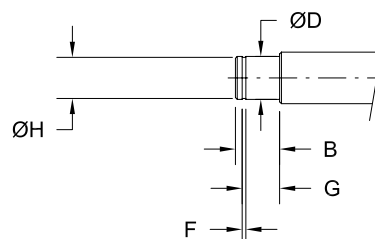
*DIN 471

End Machining Dimensions – Floating Bearing Support (BF)

With drive extension



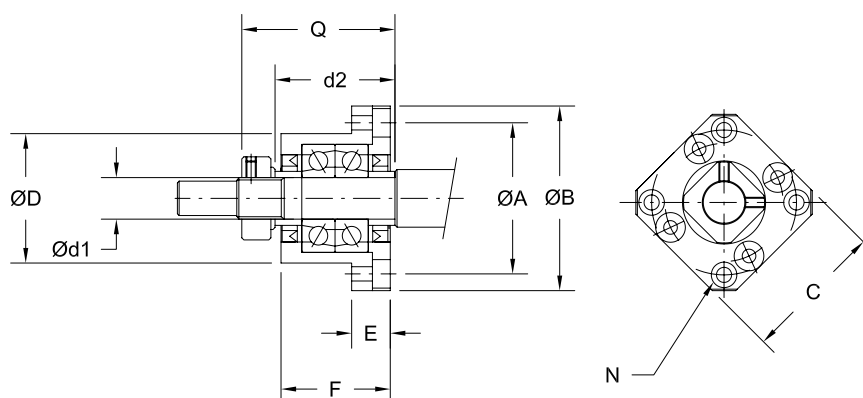
Without drive extension



Standard P/N	Dia x Lead (inch (mm))	Type BF / BF1 (inch (mm))						
		A	B	C (h7)	D (g6)	F +0.006/-0.000 (+0.140/-0.000)	G +0.008/-0.000 (+.0200/-0.000)	H +0.000/-0.008 (+0.000/-0.200)
7833368	0.500 (12)	0.984 (25.0)	0.394 (10.0)	0.2362/0.2357 (6.0)	0.3148/0.3145 (7.995/7.988)	0.035 (0.90)	0.311 (7.90)	0.299 (7.60)
7833369	0.631 (16)	1.024 (26.0)	0.433 (11.0)	0.3150/0.3144 (8.0)	0.3935/0.3932 (9.995/9.988)	0.045 (1.15)	0.360 (9.15)	0.378 (9.60)
7833370	0.750 (20)	1.299 (33.0)	0.512 (13.0)	0.4724/0.4717 (12.0)	0.5904/0.5900 (14.995/14.986)	0.045 (1.15)	0.400 (10.15)	0.563 (14.30)
7833371	0.875 (22)	1.535 (39.0)	0.630 (16.0)	0.5906/0.5898 (15.0)	0.6691/0.6687 (16.995/16.986)	0.045 (1.14)	0.518 (13.16)	0.638 (16.21)
7833372	1.000 1.171 (25)	1.614 (41.0)	0.630 (16.0)	0.6693/0.6686 (17.0)	0.7872/0.7869 (19.995/19.986)	0.053 (1.35)	0.526 (13.40)	0.748 (19.00)
7833373	1.150 1.250 1.500 x 0.473 (32) 1.500 x 1.000 (32)	1.969 (50.0)	0.787 (20.0)	0.7874/0.7866 (20.0)	0.9841/0.9837 (24.995/24.985)	0.053 (1.35)	0.644 (16.35)	0.941 (23.90)
7833374	1.500 x 0.200 1.500 x 0.250 1.500 x 0.500 1.500 x 1.875 1.500 x 2.000 (40)	2.323 (59.0)	0.827 (21.0)	0.9843/0.9834 (25.0)	1.1809/1.1805 (29.995/29.985)	0.069 (1.75)	0.699 (17.75)	1.126 (28.60)
7833375	1.750 2.000 (50)	2.974 (73.0)	0.906 (23.0)	1.3780/1.3771 (35.0)	1.5746/1.5742 (39.995/39.985)	0.077 (1.95)	0.785 (19.95)	1.496 (38.00)



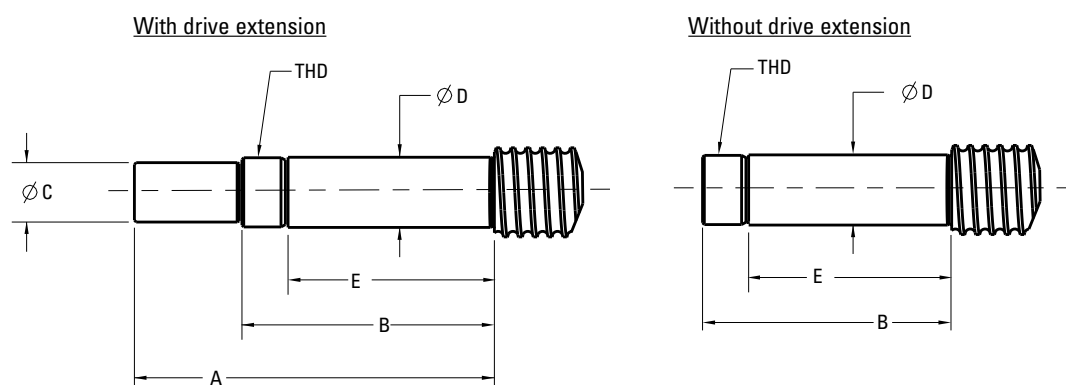
Flange Mount – Fixed Bearing Support (FK)



Standard P/N	Dia. x Lead (inch (mm))	Bearing Block Dimensions (inch (mm))									
		d1 (mm)	d2	A	B	C	D (g6)	E	F	N	Q
7833377	0.500 (12)	10	1.063 (27.0)	1.654 (42.0)	2.047 (52.0)	1.654 (42.0)	1.3382/1.3376 (34.0)	0.394 (10.0)	1.063 (27.0)	4x 0.177 (4.5) Thru, 0.315 (8.0) C-Bore x 0.157 (4.0) Dp	1.299 (33.0)
7833378	0.631 (16)	12	1.063 (27.0)	1.732 (44.0)	2.126 (54.0)	1.732 (44.0)	1.4170/1.4163 (36.0)	0.394 (10.0)	1.063 (27.0)	4x 0.177 (4.5) Thru, 0.315 (8.0) C-Bore x 0.157 (4.0) Dp	1.299 (33.0)
7833379	0.750 (20)	15	1.496 (38.0)	1.969 (50.0)	2.480 (63.0)	2.047 (52.0)	1.5744/1.5738 (40.0)	0.591 (15.0)	1.260 (32.0)	4x 0.217 (5.5) Thru, 0.374 (9.5) C-Bore x 0.236 (6.0) Dp	1.575 (40.0)
7833380	0.875 (22)	17	1.732 (44.0)	2.441 (62.0)	3.031 (77.0)	2.402 (61.0)	1.9681/1.9675 (50.0)	0.866 (22.0)	1.772 (45.0)	4x 0.260 (6.6) Thru, 0.433 (11.0) C-Bore x 0.394 (10.0) Dp	2.244 (57.0)
7833381	1.000 / 1.171 (25)	20	1.969 (50.0)	2.756 (70.0)	3.346 (85.0)	2.677 (68.0)	2.2437/2.2430 (57.0)	0.866 (22.0)	2.047 (52.0)	4x 0.260 (6.6) Thru, 0.433 (11.0) C-Bore x 0.394 (10.0) Dp	2.598 (66.0)
7833382	1.150 / 1.250 1.500 x 0.473 (32) 1.500 x 1.000 (32)	25	2.362 (60.0)	3.150 (80.0)	3.858 (98.0)	3.110 (79.0)	2.4799/2.4792 (63.0)	1.063 (27.0)	2.244 (57.0)	4x 0.354 (9.0) Thru, 0.591 (15.0) C-Bore x 0.512 (13.0) Dp	2.913 (74.0)
7833383	1.500 x 0.200 1.500 x 0.250 1.500 x 0.500 1.500 x 1.875 1.500 x 2.000 (40)	30	1.969 (50.0)	3.740 (95.0)	4.606 (117.0)	3.661 (93.0)	2.9524/2.9516 (75.0)	1.181 (30.0)	2.441 (62.0)	4x 0.433 (11.0) Thru, 0.689 (17.5) C-Bore x 0.591 (15.0) Dp	3.150 (80.0)

Standard P/N	Bearing Rating				Lock Nut Type	Block Weight (lbs (kg))	Bearing Trade No.
	Dynamic Rating		Static Rating				
	(lbs)	(N)	(lbs)	(N)			
7833377	1168	5197	430	1912	RN10	0.6 (0.3)	7000
7833378	1345	5982	478	2128	RN12	0.6 (0.3)	7001
7833379	1543	6864	529	2353	RN15	0.9 (0.4)	7002
7833380	2690	11963	910	4050	RN17	1.9 (0.9)	7203
7833381	3726	16572	1294	5756	RN20	2.5 (1.14)	7204
7833382	4608	20495	1563	6952	RN25	3.5 (1.59)	7205
7833383	6614	29418	2070	9208	RN30	5.2 (2.36)	7206

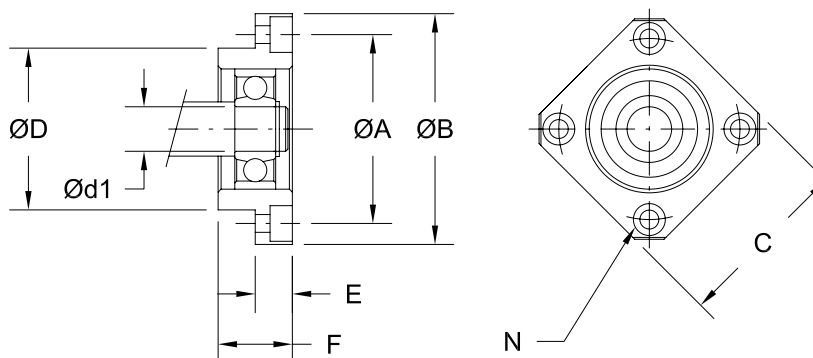
End Machining Dimensions – Fixed Bearing Support (FK)



Standard P/N	Dia x Lead (inch (mm))	Type FK / FK1 (inch (mm))					
		A	B	C (h7)	D (g6)	E	THD
7833377	0.500 (12)	2.008 (51.0)	1.417 (36.0)	0.3150/0.3144 (8.0)	0.3935/0.3932 (9.995/9.988)	0.984 (25.0)	M10x1
7833378	0.631 (16)	2.008 (51.0)	1.417 (36.0)	0.3937/0.3931 (10.0)	0.4722/0.4720 (11.995/11.988)	0.984 (25.0)	M12x1
7833379	0.750 (20)	2.638 (67.0)	1.850 (47.0)	0.4724/0.4717 (12.0)	0.5904/0.5900 (14.995/14.986)	1.339 (34.0)	M15x1
7833380	0.875	3.189 (81.0)	2.283 (58.0)	0.5906/0.5898 (15.0)	0.6691/0.6687 (16.995/16.986)	1.693 (43.0)	M17x1
7833381	1.000 / 1.171 (25)	3.425 (87.0)	2.441 (62.0)	0.6693/0.6686 (17.0)	0.7872/0.7869 (19.995/19.986)	1.772 (45.0)	M20x1
7833382	1.150 / 1.250 1.500 x 0.473 (32) 1.500 x 1.000 (32)	4.173 (106.0)	2.992 (76.0)	0.7874/0.7866 (20.0)	0.9841/0.9837 (24.995/24.985)	2.205 (56.0)	M25x1.5
7833383	1.500 x 0.200 1.500 x 0.250 1.500 x 0.500 1.500 x 1.875 1.500 x 2.000 (40)	4.331 (110.0)	2.835 (72.0)	0.9843/.9834 (25.0)	1.1809/1.1805 (29.995/29.985)	1.850 (47.0)	M30x1.5



Flange Mount – Floating Bearing Support (FF)



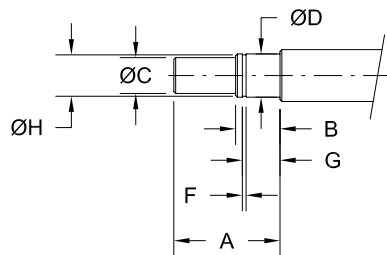
Standard P/N	Dia. x Lead (inch (mm))	Bearing Block Dimensions (inch (mm))							
		d1 (mm)	A	B	C	D (g6)	E	F	N
7833384	0.5	8	1.378 (35.0)	1.693 (43.0)	1.378 (35.0)	1.1021/1.1016 (28.0)	0.276 (7.0)	0.472 (12.0)	4x 0.134 (3.4) Thru, 0.256 (6.5) C-Bore x 0.157 (4.0) Dp
7833385	0.631 (12)	10	1.654 (42.0)	2.047 (52.0)	1.654 (42.0)	1.3382/1.3376 (34.0)	0.276 (7.0)	0.591 (15.0)	4x 0.177 (4.5) Thru, 0.315 (8.0) C-Bore x 0.157 (4.0) Dp
7833386	0.750 (20)	15	1.969 (50.0)	2.480 (63.0)	2.047 (52.0)	1.5744/1.5738 (40.0)	0.354 (9.0)	0.669 (17.0)	4x 0.217 (5.5) Thru, 0.374 (9.5) C-Bore x 0.217 (5.5) Dp
7833387	0.875 (22)	17	2.441 (62.0)	3.031 (77.0)	2.402 (61.0)	1.9681/1.9675 (50.0)	0.433 (11.0)	0.787 (20.0)	4x 0.260 (6.6) Thru, 0.433 (11.0) C-Bore x 0.256 (6.5) Dp
7833388	1.000 1.171 (25)	20	2.756 (70.0)	3.346 (85.0)	2.677 (68.0)	2.2437/2.2430 (57.0)	0.433 (11.0)	0.787 (20.0)	4x 0.260 (6.6) Thru, 0.433 (11.0) C-Bore x 0.256 (6.5) Dp
7833389	1.150 1.250 1.500 x 0.473 (32) 1.500 x 1.000 (32)	25	3.150 (80.0)	3.858 (98.0)	3.110 (79.0)	2.4799/2.4792 (63.0)	0.551 (14.0)	0.945 (24.0)	4x 0.354 (9.0) Thru, 0.551 (4.0) C-Bore x 0.335 (8.5) Dp
7833390	1.500 x 0.200 1.500 x 0.250 1.500 x 0.500 1.500 x 1.875 1.500 x 2.000 (40)	30	3.740 (95.0)	4.606 (117.0)	3.661 (93.0)	2.9524/2.9516 (75.0)	0.709 (18.0)	1.063 (27.0)	4x 0.433 (11.0) Thru, 0.669 (17.0) C-Bore x 0.433 (11.0) Dp

Standard P/N	*Snap Ring (mm)	Block Weight (lbs (kg))	Bearing Trade No.
7833384	8	0.2 (0.1)	608
7833385	10	0.3 (0.2)	6000
7833386	15	0.5 (0.2)	6002
7833387	17	0.8 (0.5)	6203
7833388	20	0.8 (0.5)	6204
7833389	25	1.5 (0.7)	6205
7833390	30	2.3 (1.1)	6206

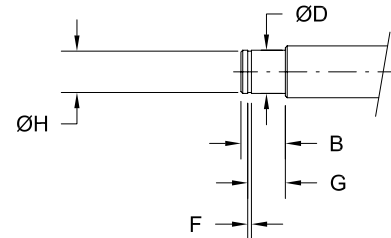
*DIN 471

End Machining Dimensions – Floating Bearing Support (FF)

With drive extension



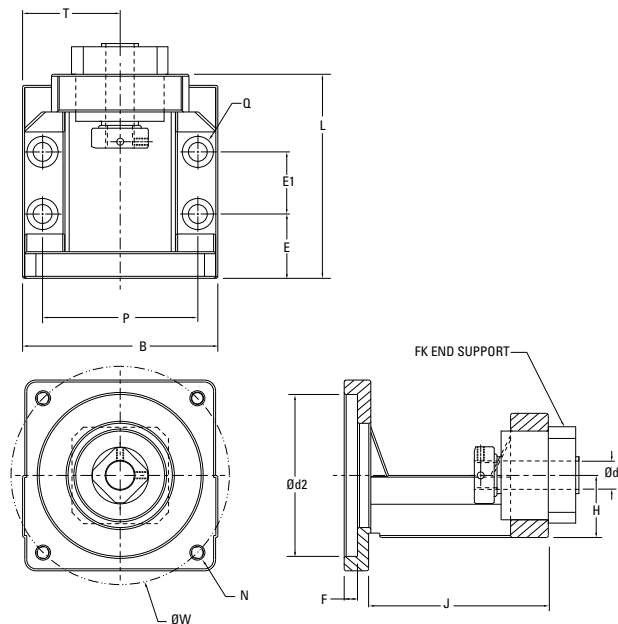
Without drive extension



Standard P/N	Dia x Lead (inch (mm))	Type FF / FF1 (inch (mm))						
		A	B	C (h7)	D (g6)	F +0.006/-0.000 (+0.140/-0.000)	G +0.008/-0.000 (+0.200/-0.000)	H +0.000/-0.008 (+0.000/-0.200)
7833384	0.500 (12)	0.984 (25.0)	0.394 (10.0)	0.236 (6.0)	0.3148/0.3145 (7.995/7.988)	0.035 (0.90)	0.311 (7.90)	0.299 (7.60)
7833385	0.631 (16)	1.024 (26.0)	0.433 (11.0)	0.315 (8.0)	0.3935/0.3932 (9.995/9.988)	0.045 (1.15)	0.360 (9.15)	0.378 (9.60)
7833386	0.750 (20)	1.299 (33.0)	0.512 (13.0)	0.472 (12.0)	0.5904/0.5900 (14.995/14.986)	0.045 (1.15)	0.400 (10.15)	0.563 (14.30)
7833387	0.875 (22)	1.535 (39.0)	0.630 (16.0)	0.591 (15.0)	0.6691/0.6687 (16.995/16.986)	0.045 (1.14)	0.518 (13.16)	0.638 (16.21)
7833388	1.000 1.171 (25)	1.614 (41.0)	0.748 (19.0)	0.669 (17.0)	0.7872/0.7869 (19.995/19.986)	0.053 (1.35)	0.604 (15.35)	0.748 (19.00)
7833389	1.150 1.250 1.500 x 0.473 (32) 1.500 x 1.000 (32)	1.969 (50.0)	0.787 (20.0)	0.787 (20.0)	0.9841/0.9837 (24.995/24.985)	0.053 (1.35)	0.644 (16.35)	0.941 (23.90)
7833390	1.500 x 0.200 1.500 x 0.250 1.500 x 0.500 1.500 x 1.875 1.500 x 2.000 (40)	2.323 (59.0)	0.827 (21.0)	0.984 (25.0)	1.1809/1.1805 (29.995/29.985)	0.069 (1.75)	0.699 (17.75)	1.126 (28.60)



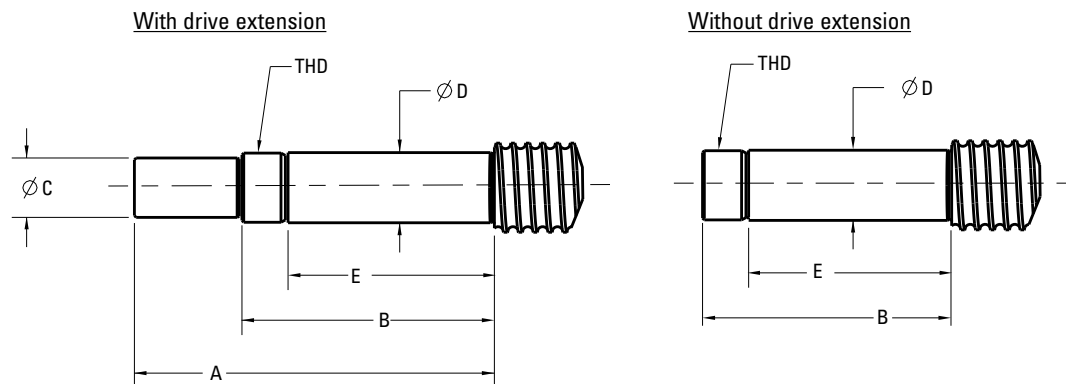
Motor Mount – Fixed Bearing Support (MK)



Standard P/N	Dia x Lead (inch (mm))	Bearing Block Dimensions (inch)																
		d1 (mm)	d2	W	N	D	L	H ±0.001 (±0.02)	B	P	T	E	E1	F	J	FK Support	Frame Size	S
7833685	0.500 (12)	10	1.500 (38.1)	2.626 (66.7)	M4	1.339 (34)	2.913 (74)	0.866 (22.00)	2.559 (65)	1.969 (50)	1.280 (32.5)	0.945 (24)	0.787 (20)	0.157 (4)	2.559 (65)	7833377	NEMA 23	4x 0.260 (6.6) Thru, 0.441 (11.2) C-Bore x 0.236 (6.0)
7833686	0.631 (16)	12	1.500 (38.1)	2.626 (66.7)	M4	1.417 (36)	2.913 (74)	0.984 (25.00)	2.559 (65)	1.969 (50)	1.280 (32.5)	0.945 (24)	0.787 (20)	0.157 (4)	2.559 (65)	7833378	NEMA 23	4x 0.260 (6.6) Thru, 0.441 (11.2) C-Bore x 0.236 (6.0)
7833687	0.750 (20)	15	1.500 (38.1)	2.626 (66.7)	M4	1.575 (40)	3.228 (82)	1.102 (28.009)	2.756 (70)	2.165 (55)	1.378 (35.0)	0.945 (24)	1.102 (28)	0.157 (4)	2.874 (73)	7833379	NEMA 23	4x 0.260 (6.6) Thru, 0.441 (11.2) C-Bore x 0.236 (6.0)
7833690	1.000/1.171 (25)	20	2.874 (73.0)	3.874 (98.4)	M6	2.244 (57)	4.449 (113)	1.339 (34.00)	3.465 (88)	2.756 (70)	1.732 (44.0)	1.142 (29)	1.654 (42)	0.236 (6)	4.016 (102)	7833691	NEMA 34	4x 0.335 (8.5) Thru, 0.571 (14.5) C-Bore x 0.315 (8.0) Dp

Standard P/N	Bearing Rating				Lock Nut Type	Block Weight (lbs (kg))	Bearing Trade No.
	Dynamic Rating		Static Rating				
	(lbs)	(N)	(lbs)	(N)			
7833685	1168	5197	430	1912	RN10	0.6 (0.3)	7000
7833686	1345	5982	478	2128	RN12	0.6 (0.3)	7001
7833687	1543	6864	529	2353	RN15	0.9 (0.4)	7002
7833690	3726	16572	1294	5756	RN20	2.5 (1.14)	7204

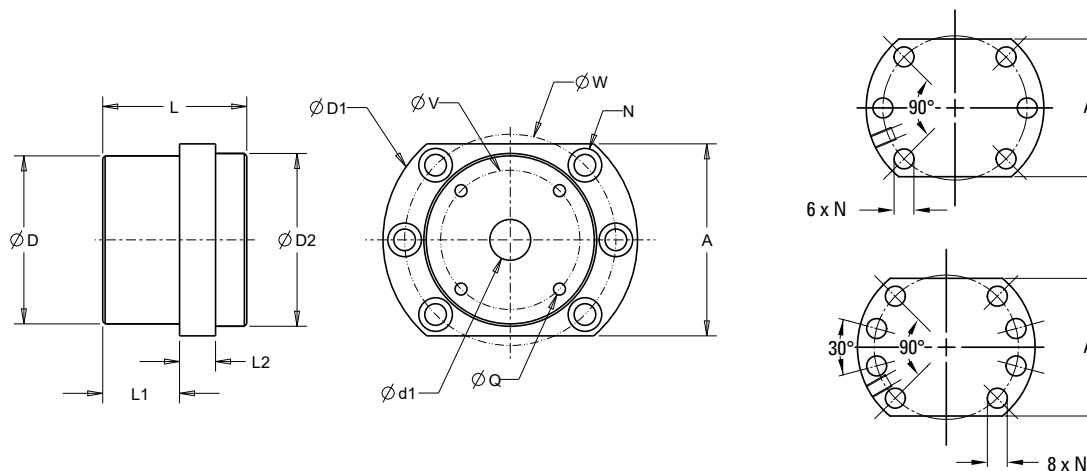
End Machining Dimensions – Fixed Bearing Support (MK)



Standard P/N	Dia x Lead (inch (mm))	Type MK / MK1 (inch (mm))					
		A	B	C (h7)	D (g6)	E	THD
7833685	0.500 (12)	2.008 (51.0)	1.417 (36.0)	0.3150/0.3144 (8.0)	0.3935/0.3932 (9.995/9.988)	0.984 (25.0)	M10x1
7833686	0.631 (16)	2.008 (51.0)	1.417 (36.0)	0.3937/0.3931 (10.0)	0.4722/0.4720 (11.995/11.988)	0.984 (25.0)	M12x1
7833687	0.750 (20)	2.638 (67.0)	1.850 (47.0)	0.4724/0.4717 (12.0)	0.5904/0.5900 (14.995/14.986)	1.339 (34.0)	M15x1
7833690	1.000 / 1.171 (25)	3.425 (87.0)	2.441 (62.0)	0.6693/0.6686 (17.0)	0.7872/0.7869 (19.995/19.986)	1.772 (45.0)	M20x1



Flange Mount – Fixed Bearing Support (WK)

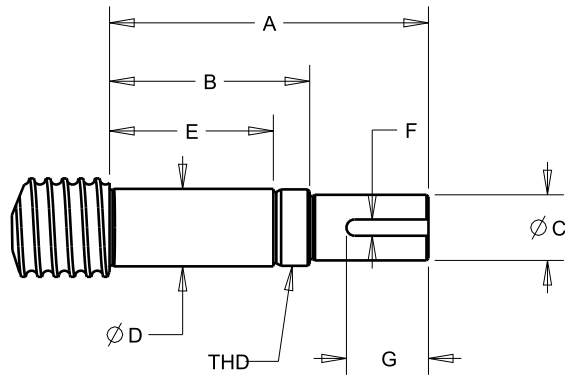


Standard P/N	Dia. x Lead (inch (mm))	Bearing Block Dimensions (inch (mm))											
		d1 (mm)	D g6	D1	D2	L	L1	L2	A	W	N	V	Q
7833595	0.875 (22)	17	2.756 (70.0)	4.173 (106.0)	2.835 (72.0)	2.362 (60.0)	1.260 (32.0)	0.591 (15.0)	3.150 (80.0)	3.465 (88.00)	6x 0.354 (9.0) Thru, 0.551 (14.0) C-Bore x 0.335 (8.5)	2.283 (58.0)	4x M5 THD, x .0394 Dp (4x M5 THD, x 10 Dp)
7833596	1.000 / 1.171 (25)	20	2.756 (70.0)	4.173 (106.0)	2.835 (72.0)	2.362 (60.0)	1.260 (32.0)	0.591 (15.0)	3.150 (80.0)	3.465 (88.00)	6x 0.354 (9.0) Thru, 0.551 (14.0) C-Bore x 0.335 (8.5)	2.283 (58.0)	4x M5 THD, x .0394 Dp (4x M5 THD, x 10 Dp)
7833597	1.150 / 1.250 1.500 x 0.473 (32) 1.500 x 1.000 (32)	25	3.346 (85.0)	5.118 (130.0)	3.543 (90.0)	2.598 (66.0)	1.299 (33.0)	0.709 (18.0)	3.937 (100.0)	4.331 (110.00)	6x 0.433 (11.0) Thru, 0.669 (17.0) C-Bore x 0.433 (11.0)	2.756 (70.0)	4x M6 THD, x 0.472 Dp (4x M6 THD, x 12 Dp)
7833599	1.500 x 0.200 1.500 x 0.250 1.500 x 0.500 1.500 x 1.875 1.500 x 2.000 (40)	30	3.346 (85.0)	5.118 (130.0)	3.543 (90.0)	2.598 (66.0)	1.299 (33.0)	0.709 (18.0)	3.937 (100.0)	4.331 (110.00)	6x 0.433 (11.0) Thru, 0.669 (17.0) C-Bore x 0.433 (11.0)	2.756 (70.0)	4x M6 THD, x 0.472 Dp (4x M6 THD, x 12 Dp)
7833602	1.750 / 2.000 (50)	40	3.740 (95.0)	5.591 (142.0)	4.016 (66.0)	2.598 (66.0)	1.299 (33.0)	0.709 (18.0)	3.937 (100.0)	4.331 (110.00)	8x 0.433 (11.0) Thru, 0.669 (17.0) C-Bore x 0.433 (11.0)	3.150 (80.0)	4x M6 THD, x 0.472 Dp (4x M6 THD, x 12 Dp)

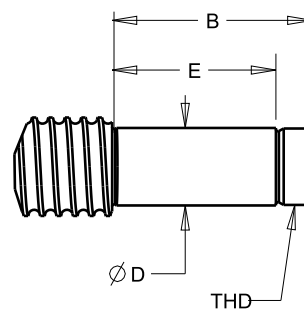
Standard P/N	Bearing Rating				Lock Nut Type	Block Weight (lbs (kg))	Bearing Trade No.
	Dynamic Rating		Static Rating				
	(lbs)	(N)	(lbs)	(N)			
7833595	5974	26574	4938	21966	M17x1	4.2 (1.9)	
7833596	5974	26574	4938	21966	M20x1	4.2 (1.9)	
7833597	9149	40695	6415	28536	M25x1.5	6.8 (3.1)	
7833599	9700	43147	6570	29222	M30x1.5	6.6 (3.0)	
7833602	11684	51972	7165	31870	M40x1.5	7.9 (3.6)	

End Machining Dimensions – Fixed Bearing Support (WK)

TYPE WK, REQUIRED FOR WK SUPPORT



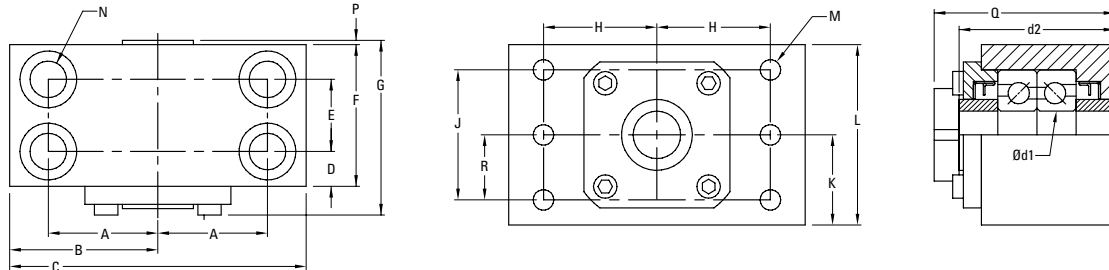
TYPE WK1, REQUIRED FOR WK SUPPORT



Standard P/N	Dia x Lead (inch (mm))	Type WK / WK1 (inch (mm))							
		A	B	C	D	E	F	G	THD
7833595	0.875	4.528 (115.0)	3.189 (81.0)	0.5906/0.5898 (15.0)	0.6691/0.6687 (16.995/16.986)	2.283 (58.0)	0.197 (5.0)	1.181 (30.0)	M17x1
7833596	1.000 / 1.171 (25)	4.528 (115.0)	3.189 (81.0)	0.6693/0.6686 (17.0)	0.7872/0.7869 (19.995/19.986)	2.283 (58.0)	0.197 (5.0)	1.181 (30.0)	M20x1
7833597	1.150 / 1.250 1.500 x 0.473 (32) 1.500 x 1.000 (32)	5.039 (128.0)	3.504 (89.0)	0.7874/0.7866 (20.0)	0.9841/0.9837 (24.995/24.985)	2.480 (63.0)	0.197 (5.0)	1.260 (32.0)	M25x1.5
7833599	1.500 x 0.200 1.500 x 0.250 1.500 x 0.500 1.500 x 1.875 1.500 x 2.000 (40)	5.315 (135.0)	3.504 (89.0)	0.9843/0.9834 (25.0)	1.1809/1.1805 (29.995/29.985)	2.480 (63.0)	0.315 (8.0)	1.339 (34.0)	M30x1.5
7833602	1.750 / 2.000 (50)	5.787 (147.0)	3.622 (92.0)	1.3780/1.3771 (35.0)	1.5746/1.5742 (39.995/39.985)	2.441 (62.0)	0.315 (8.0)	1.850 (47.0)	M40x1.5



Base and Flange Mount – Fixed Bearing Support (QK)

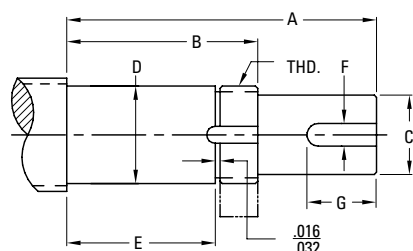


Standard P/N inch (metric)	Dia. x Lead (inch (mm))	Bearing Block Dimensions (inch (mm))																P	Q	R
		d1 (mm)	d2	A & H	B	C	D	E	F	G	J	K	L	M	N					
7828282 (7829546)	0.500 (12)	9	1.530 (37.0)	1.000 (25.4)	1.380 (35.0)	2.750 (70.0)	0.630 (16.0)	-	1.190 (30.2)	1.645 (35.0)	1.375 (35.0)	1.000 (25.40)	2.000 (50.8)	4x 0.281 (7.13)	2x 0.281 (7.1) Thru, 0.50 (12.7) C-Bore x 0.56 (14.2) Dp	-	1.8 (46.25)	0.688 (17.5)		
7824154 (7829547)	0.631 (16)	12	1.260 (32.0)	1.125 (28.6)	1.500 (38.0)	3.000 (76.0)	0.670 (17.0)	-	1.340 (34.0)	1.700 (43.0)	1.125 (29.0)	1.000 (25.40)	1.880 (47.8)	4x 0.281 (7.13)	2x 0.406 (10.31) Thru, 0.625 (15.88) C-Bore x 0.875 (22.23) Dp	0.02 (0.51)	1.6 (40.64)	0.625 (15.9)		
7824155 (7829548)	0.750 (20)	15	1.730 (44.0)	1.250 (31.8)	1.750 (45.0)	3.500 (89.0)	0.750 (19.0)	-	1.500 (38.0)	1.900 (47.0)	1.375 (35.0)	1.125 (28.58)	2.130 (54.1)	4x 0.281 (7.13)	2x 0.406 (10.31) Thru, 0.625 (15.88) C-Bore x 0.875 (22.23) Dp	0.02 (0.51)	2.1 (53.34)	0.750 (19.1)		
7824156 (N/A)	0.875 (22)	17	1.890 (48.0)	1.437 (36.5)	2.000 (50.8)	4.000 (101.6)	0.830 (21.1)	-	1.660 (42.2)	2.000 (50.8)	1.375 (35.0)	1.250 (31.75)	2.380 (60.5)	4x 0.406 (10.31)	2x 0.531 (13.48) Thru, 0.812 (20.62) C-Bore x 1.125 (28.57) Dp	0.02 (0.51)	2.3 (58.42)	0.750 (19.1)		
7824157 (7829549)	1.000 / 1.171 (25)	20	2.200 (56.0)	1.625 (41.3)	2.250 (57.0)	4.500 (114.0)	0.940 (24.0)	-	1.870 (48.0)	2.400 (60.0)	1.750 (44.0)	1.438 (36.53)	2.750 (69.9)	4x 0.469 (11.91)	2x 0.656 (16.66) Thru, 1.00 (25.40) C-Bore x 1.312 (33.33) Dp	0.04 (1.00)	2.7 (68.58)	0.938 (23.8)		
7824158 (7829550)	1.150 / 1.250 / 1.500 x 0.473 (32) / 1.500 x 1.000 (32)	25	2.360 (60.0)	2.125 (54.0)	3.000 (76.0)	6.000 (152.0)	0.970 (24.5)	-	1.940 (49.0)	2.600 (65.0)	2.000 (51.0)	1.750 (44.45)	3.380 (85.9)	4x 0.656 (16.66)	2x 0.906 (23.01) Thru, 1.375 (34.93) C-Bore x 2.00 (50.80) Dp	0.03 (0.76)	2.9 (73.66)	1.000 (25.40)		
7824159 (7829551)	1.500 x 0.200 / 1.500 x 0.250 / 1.500 x 0.500 / 1.500 x 1.875 / 1.500 x 2.000 (40)	30	2.520 (64.0)	2.375 (60.3)	3.250 (83.0)	6.500 (165.0)	1.030 (26.0)	-	2.060 (52.0)	2.700 (68.0)	2.000 (51.0)	1.875 (47.63)	3.630 (92.2)	4x 0.656 (16.66)	2x .0906 (23.01) Thru, 1.375 (34.93) C-Bore x 2.062 (53.38) Dp	0.045 (1.14)	3 (76.20)	1.000 (25.40)		
7829554 (7829552)	1.750 (50)	40	3.620 (92.0)	2.937 (74.6)	3.750 (96.0)	7.500 (192.0)	0.760 (19.2)	1.630 (41.5)	3.150 (80.0)	3.800 (96.0)	3.000 (76.0)	2.250 (57.15)	4.250 (108.0)	6x 0.656 (16.66)	4x 0.906 (23.01) Thru, 1.375 (34.93) C-Bore x 2.25 (57.15) Dp	0.05 (1.27)	4.2 (106.68)	1.500 (38.10)		
7824160 (N/A)	2.000	45	3.940 (100.0)	3.313 (84.2)	4.250 (108.0)	8.500 (216.0)	0.870 (22.1)	1.720 (43.8)	3.470 (88.1)	4.200 (106.7)	3.625 (92.0)	2.813 (71.54)	5.630 (143.0)	6x 0.812 (20.63)	4x 1.031 (26.19) Thru, 1.625 (41.28) C-Bore x 3.50 (88.90) Dp	0.05 (1.27)	4.5 (114.30)	1.813 (46.05)		
7824161 (7829553)	2.500 (63)	50	4.250 (108.0)	3.563 (90.5)	4.500 (115.0)	9.000 (230.0)	0.920 (23.5)	1.720 (43.8)	3.560 (90.8)	4.500 (113.0)	3.625 (92.0)	2.813 (71.54)	5.630 (143.0)	6x 0.812 (20.63)	4x 1.031 (26.19) Thru, 1.625 (41.28) C-Bore x 3.50 (88.90) Dp	0.05 (2.29)	4.9 (124.46)	1.813 (46.10)		

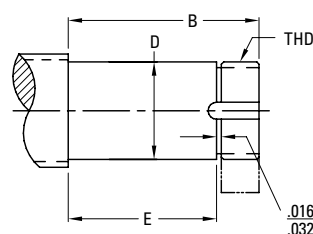
Standard P/N inch (metric)	Bearing Rating				Lock Nut Type inch (metric)	Block Weight (lbs (kg))	Bearing Trade No.
	Dynamic Rating		Static Rating				
	(lbs)	(N)	(lbs)	(N)			
7828282 (7829546)	1030	4550	440	1960	5/16-24 (M8-1.25)	2.0 (0.9)	609
7824154 (7829547)	1600	7100	630	2790	N-01 (KM-01)	1.5 (0.7)	7201
7824155 (7829548)	2320	10300	1060	4700	N-02 (KM-02)	3.5 (1.6)	7202
7824156 (N/A)	3200	14200	1560	6930	N-03	3.5 (1.6)	7203
7824157 (7829549)	3225	14300	1838	8150	N-04 (KM-04)	5.5 (2.5)	7204
7824158 (7829550)	3750	16600	2120	9400	N-05 (KM-05)	9.5 (4.3)	7205
7824159 (7829551)	5200	23000	3050	13500	N-06 (KM-06)	11.5 (5.2)	7206
7829554 (7829552)	11400	50600	6800	30200	N-08 (KM-08)	21.5 (9.8)	7308
7824160 (N/A)	15000	66600	9000	39900	N-09	35.0 (15.6)	7309
7824161 (7829553)	17300	76800	10800	47900	N-10 (KM-10)	39.0 (17.7)	7310

End Machining Dimensions – Fixed Bearing Support (QK)

With drive extension



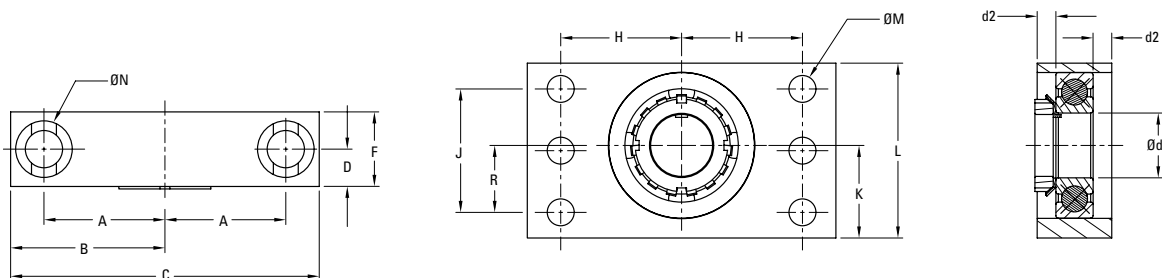
Without drive extension



Standard P/N	Dia x Lead (inch (mm))	Type QK/QK1 (inch (mm))							
		A	B	C (h7)	D (g6)	E	F	G	THD
7828282 (7829546)	0.500 (12)	2.915 (73.0)	1.665 (46.0)	0.2500/0.2490 (6.000/5.987)	0.3544/0.3541 (9.001/8.994)	1.260 (36.0)	0.094 (-)	1.000 (-)	5/16-24 (M8-1.25)
7824154 (7829547)	0.631 (16)	3.292 (84.0)	1.992 (51.0)	0.4060/0.4050 (10.000/9.987)	0.4726/0.4723 (12.006/11.999)	1.576 (40.0)	0.125 (3.0)	1.250 (32.0)	N-01 (KM-01)
7824155 (7829548)	0.750 (20)	3.180 (80.0)	2.180 (55.0)	0.5000/0.4990 (12.000/11.984)	0.5908/0.5905 (15.006/14.999)	1.732 (44.0)	0.125 (4.0)	0.875 (22.0)	N-02 (KM-02)
7824156 (N/A)	0.875 (22)	3.649 (92.7)	2.334 (59.3)	0.5620/0.5610	0.6695/0.6692	1.888 (48.0)	0.125 (3.18)	1.250 (31.8)	N-03
7824157 (7829549)	1.000 / 1.171 (25)	4.028 (103.0)	2.713 (69.0)	0.6250/0.6240 (16.000/15.984)	0.7877/0.7873 (20.007/19.997)	2.204 (56.0)	0.188 (5.0)	1.250 (31.8)	N-04 (KM-04)
7824158 (7829550)	1.150 / 1.250 1.500 x 0.473 (32) 1.500 x 1.000 (32)	4.453 (113.0)	2.893 (74.0)	0.7500/0.7490 (20.000/19.980)	0.9846/0.9842 (25.008/24.996)	2.364 (60.0)	0.188 (5.0)	1.250 (31.8)	N-05 (KM-05)
7824159 (7829551)	1.500 x 0.200 1.500 x 0.250 1.500 x 0.500 1.500 x 1.875 1.500 x 2.000 (40)	4.860 (124.0)	3.050 (78.0)	1.000/0.9990 (25.000/24.980)	1.1814/1.1810 (30.007/29.997)	2.496 (63.39)	0.250 (6.4)	1.250 (31.8)	N-06 (KM-06)
7829554 (7829552)	1.750 (50)	6.368 (164.0)	4.178 (109.0)	1.3750/1.3740 (32.000/31.976)	1.5752/1.5747 (30.007/29.997)	3.624 (92.0)	0.313 (8.0)	1.875 (47.6)	N-08 (KM-08)
7824160 (N/A)	2.000	6.682 (169.7)	4.492 (114.1)	1.3750/1.3740 (32.000/31.976)	1.7721/1.7716 (45.011/44.999)	3.936 (100.0)	0.313 (8.0)	1.875 (47.6)	N-09
7824161 (7829553)	2.500 (63)	7.749 (197.0)	4.872 (124.0)	1.7500/1.7490 (40.000/39.377)	1.9689/1.9684 (50.010/49.997)	4.252 (108.0)	0.375 (10.0)	2.750 (69.9)	N-10 (KM-10)



Base and Flange Mount – Floating Bearing Support (QF)

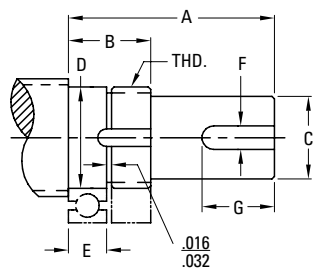


Standard P/N inch (metric)	Dia. x Lead (inch (mm))	Bearing Block Dimensions (inch (mm))														
		d1 (mm)	d2	A & H	B	C	D	F	J	K	L	M	N	Q	R	
7833291 (7833292)	0.500 (12)	9	0.118 (3.0)	1.000 (25.4)	1.380 (35.0)	2.750 (70.0)	0.276 (7.0)	0.551 (14.0)	1.375 (35.0)	1.000 (25.40)	2.000 (50.8)	4x 0.281 (7.13)	2x 0.281 (7.1) Thru, 0.50 (12.7) C-Bore x 0.56 (14.2) Dp	0.757 (18.5)	0.688 (17.5)	
7833256 (7833282)	0.631 (16)	12	0.197 (5.0)	1.125 (28.6)	1.500 (38.0)	3.000 (76.0)	0.394 (10.0)	0.787 (20.0)	1.125 (29.0)	1.000 (25.40)	1.880 (47.8)	4x 0.281 (7.13)	2x 0.406 (10.31) Thru, 0.625 (15.88) C-Bore x 0.875 (22.23) Dp	0.96 (20.0)	0.625 (15.9)	
7833259 (7833283)	0.750 (20)	15	0.217 (5.5)	1.250 (31.8)	1.750 (45.0)	3.500 (89.0)	0.433 (11.0)	0.866 (22.1)	1.375 (35.0)	1.125 (28.58)	2.130 (54.1)	4x 0.281 (7.13)	2x 0.406 (10.31) Thru, 0.625 (15.88) C-Bore x 0.875 (22.23) Dp	1.019 (22.0)	0.750 (19.1)	
7833262 (N/A)	0.875 (22)	17	0.236 (6.0)	1.437 (36.5)	2.000 (50.8)	4.000 (101.6)	0.473 (12.0)	0.945 (24.0)	1.375 (35.0)	1.250 (31.75)	2.380 (60.5)	4x 0.406 (10.31)	2x 0.531 (13.48) Thru, 0.812 (20.62) C-Bore x 1.125 (28.57) Dp	1.109 (22.0)	0.750 (19.1)	
7833265 (7833284)	1.000 / 1.171 (25)	20	0.276 (7.0)	1.625 (41.3)	2.250 (57.0)	4.500 (114.0)	0.551 (14.0)	1.102 (28.0)	1.750 (44.0)	1.438 (36.53)	2.750 (69.9)	4x 0.469 (11.91)	2x 0.656 (16.66) Thru, 1.00 (25.40) C-Bore x 1.312 (33.33) Dp	1.258 (22.0)	0.938 (23.8)	
7833268 (7833285)	1.150 / 1.250 1.500 x 0.473 (32) 1.500 x 1.000 (32)	25	0.531 (13.5)	2.125 (54.0)	3.000 (76.0)	6.000 (152.0)	0.827 (21.0)	1.654 (42.0)	2.000 (51.0)	1.750 (44.45)	3.380 (85.9)	4x 0.656 (16.66)	2x 0.906 (23.01) Thru, 1.375 (34.93) C-Bore x 2.00 (50.80) Dp	1.654 (28.0)	1.000 (25.40)	
7833270 (7833286)	1.500 x 0.200 1.500 x 0.250 1.500 x 0.500 1.500 x 1.875 1.500 x 2.000 (40)	30	0.512 (13.0)	2.375 (60.3)	3.250 (83.0)	6.500 (165.0)	0.827 (21.0)	1.654 (42.0)	2.000 (51.0)	1.875 (47.63)	3.630 (92.2)	4x 0.656 (16.66)	2x .0906 (23.01) Thru, 1.375 (34.93) C-Bore x 2.062 (53.38) Dp	1.654 (42.0)	1.000 (25.40)	
7833273 (7833287)	1.750 (50)	40	0.453 (11.5)	2.937 (74.6)	3.750 (96.0)	7.500 (192.0)	0.906 (23.0)	1.811 (46.0)	3.000 (76.0)	2.250 (57.15)	4.250 (108.0)	6x 0.656 (16.66)	4x 0.906 (23.01) Thru, 1.375 (34.93) C-Bore x 2.25 (57.15) Dp	1.869 (42.0)	1.500 (38.10)	
7833276 (N/A)	2.000	45	0.492 (12.5)	3.313 (84.2)	4.250 (108.0)	8.500 (216.0)	0.985 (25.0)	1.969 (50.0)	3.625 (92.0)	2.813 (71.54)	5.630 (143.0)	6x 0.812 (20.63)	4x 1.031 (26.19) Thru, 1.625 (41.28) C-Bore x 3.50 (88.90) Dp	1.987 (50.5)	1.813 (46.05)	
7833279 (7833288)	2.500 (63)	50	0.531 (13.5)	3.563 (90.5)	4.500 (115.0)	9.000 (230.0)	1.063 (27.0)	2.126 (54.0)	3.625 (92.0)	2.813 (71.54)	5.630 (143.0)	6x 0.812 (20.63)	4x 1.031 (26.19) Thru, 1.625 (41.28) C-Bore x 3.50 (88.90) Dp	2.167 (54.0)	1.813 (46.10)	

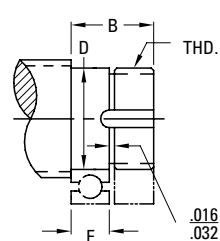
Standard P/N inch (metric)	Lock nut (mm)	Block Weight (lbs (kg))	Bearing Trade No.
7833291 (7833292)	5/16-24 (M8-1.25)	0.8 (0.4)	609
7833256 (7833282)	N-01 (KM-01)	1.3 (0.6)	6201
7833259 (7833283)	N-02 (KM-02)	1.6 (0.7)	6202
7833262 (N/A)	N-03	2.3 (1.0)	6203
7833265 (7833284)	N-04 (KM-04)	5.8 (2.6)	6204
7833268 (7833285)	N-05 (KM-05)	6.8 (3.1)	6205
7833270 (7833286)	N-06 (KM-06)	8.7 (3.9)	6206
7833273 (7833287)	N-08 (KM-08)	9.7 (4.4)	6308
7833276 (N/A)	N-09	16.2 (7.3)	6309
7833279 (7833288)	N-10 (KM-10)	18.5 (8.4)	6310

End Machining Dimensions – Floating Bearing Support (QF)

With drive extension



Without drive extension



Standard P/N	Dia x Lead (inch (mm))	Type QF/QF1 (inch (mm))							
		A	B	C (h7)	D (g6)	E	F	G	THD
7833291 (7833292)	0.500 (12)	1.970 (46.0)	0.720 (19.0)	0.2500/0.2490 (6.000/5.987)	0.3544/0.3541 (9.001/8.994)	0.315 (7.0)	0.094 (-)	1.000 (-)	5/16-24 (M8-1.25)
7833256 (7833282)	0.631 (16)	2.110 (54.0)	0.810 (21.0)	0.4060/0.4050 (10.000/9.987)	0.4726/0.4723 (12.006/11.999)	0.394 (10.0)	0.125 (3.0)	1.250 (30.0)	N-01 (KM-01)
7833259 (7833283)	0.750 (20)	1.870 (47.09)	0.870 (22.0)	0.5000/0.4990 (12.000/11.984)	0.5908/0.5905 (15.006/14.999)	0.433 (11.0)	0.125 (4.0)	0.875 (22.0)	N-02 (KM-02)
7833262 (N/A)	0.875 (22)	2.233 (56.7)	0.918 (23.3)	0.5620/0.5610	0.6695/0.6692	0.472 (12.0)	0.125 (3.18)	1.250 (31.8)	N-03
7833265 (7833284)	1.000 / 1.171 (25)	2.375 (61.0)	1.060 (27.0)	0.6250/0.6240 (16.000/15.984)	0.7877/0.7873 (20.007/19.997)	0.551 (14.0)	0.188 (5.0)	1.250 (30.0)	N-04 (KM-04)
7833268 (7833285)	1.150 / 1.250 1.500 x 0.473 (32) 1.500 x 1.000 (32)	2.680 (68.0)	1.120 (29.0)	0.7500/0.7490 (20.000/19.980)	0.9846/0.9842 (25.008/24.996)	0.591 (15.09)	0.188 (5.0)	1.250 (32.0)	N-05 (KM-05)
7833270 (7833286)	1.500 x 0.200 1.500 x 0.250 1.500 x 0.500 1.500 x 1.875 1.500 x 2.000 (40)	2.970 (76.09)	1.160 (30.0)	1.000/0.9990 (25.000/24.980)	1.1814/1.1810 (30.007/29.997)	0.630 (16.0)	0.250 (8.0)	1.250 (34.0)	N-06 (KM-06)
7833273 (7833287)	1.750 (50)	3.650 (95.0)	1.460 (40.0)	1.3750/1.3740 (32.000/31.976)	1.5752/1.5747 (40.010/39.997)	0.906 (23.0)	0.313 (8.0)	1.875 (47.0)	N-08 (KM-08)
7833276 (N/A)	2.000	3.730 (94.7)	1.540	1.3750/1.3740	1.7721/1.7716	0.984 (25.0)	0.313 (8.0)	1.875 (47.6)	N-09
7833279 (7833288)	2.500 (63)	4.560 (116.0)	1.680 (43.0)	1.7500/1.7490 (40.000/39.377)	1.9689/1.9684 (50.010/49.997)	1.063 (27.0)	0.375 (10.0)	2.750 (65.0)	N-10 (KM-10)